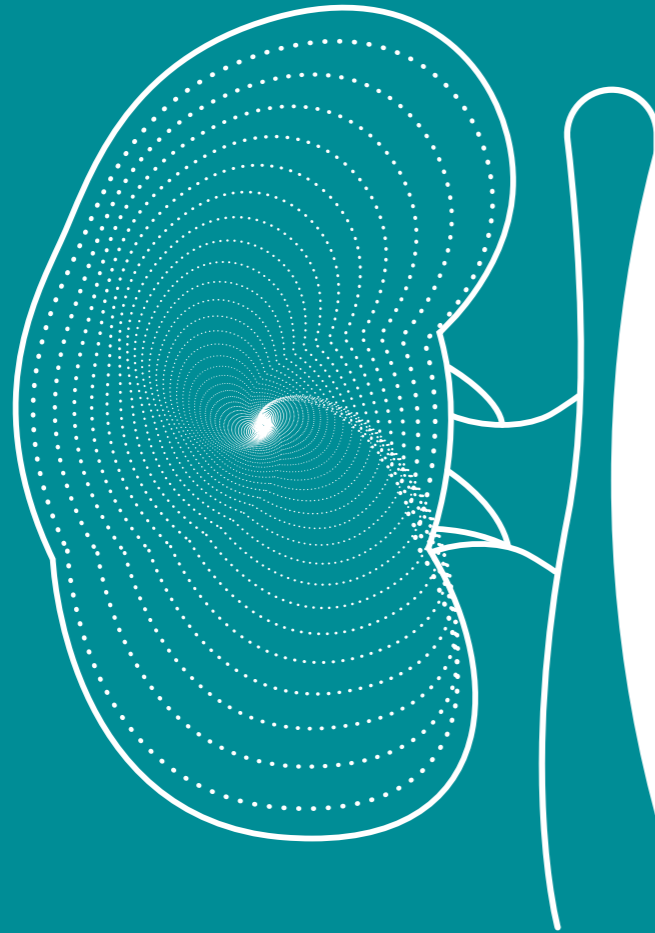




BaxDuo **Pacific**

***A new clinical study for people
with chronic kidney disease
and high blood pressure.***

This **quick guide** is to help you decide
whether the study might be right for you.



What is this study about?

Thank you for your interest in BaxDuo-Pacific.

Your doctor has suggested this study because you have **chronic kidney disease (CKD)** and **high blood pressure**, and are taking an ACE inhibitor or ARB* for your high blood pressure.

This study is looking at 2 drugs:



An **experimental** treatment called **baxdrostat**



A CKD treatment already approved in many countries, called **dapagliflozin**

We want to find out whether baxdrostat and dapagliflozin **together** may work better than dapagliflozin on its own in people with CKD and high blood pressure.

*ACE = angiotensin-converting enzyme; ARB = angiotensin 2 receptor blocker.



A clinical study is a type of medical research used to help doctors and researchers see how well an experimental medicine works in people. It also explores whether this medicine has any side effects and if it works better than current treatments used to treat a condition.

NOTE

All study visits, tests, and treatments will be provided at no cost. You will also be reimbursed for travel costs and some food costs at longer appointments.

Why might I want to take part?

Everyone taking part will receive dapagliflozin throughout the study. Dapagliflozin is already **approved** in many countries, and is often the **standard-of-care treatment** for CKD.

Taking part may also mean:



Access to an experimental treatment (baxdrostat), which may help to lower your blood pressure and protect your kidneys from further damage



More frequent and detailed health checks than you would get outside of the study



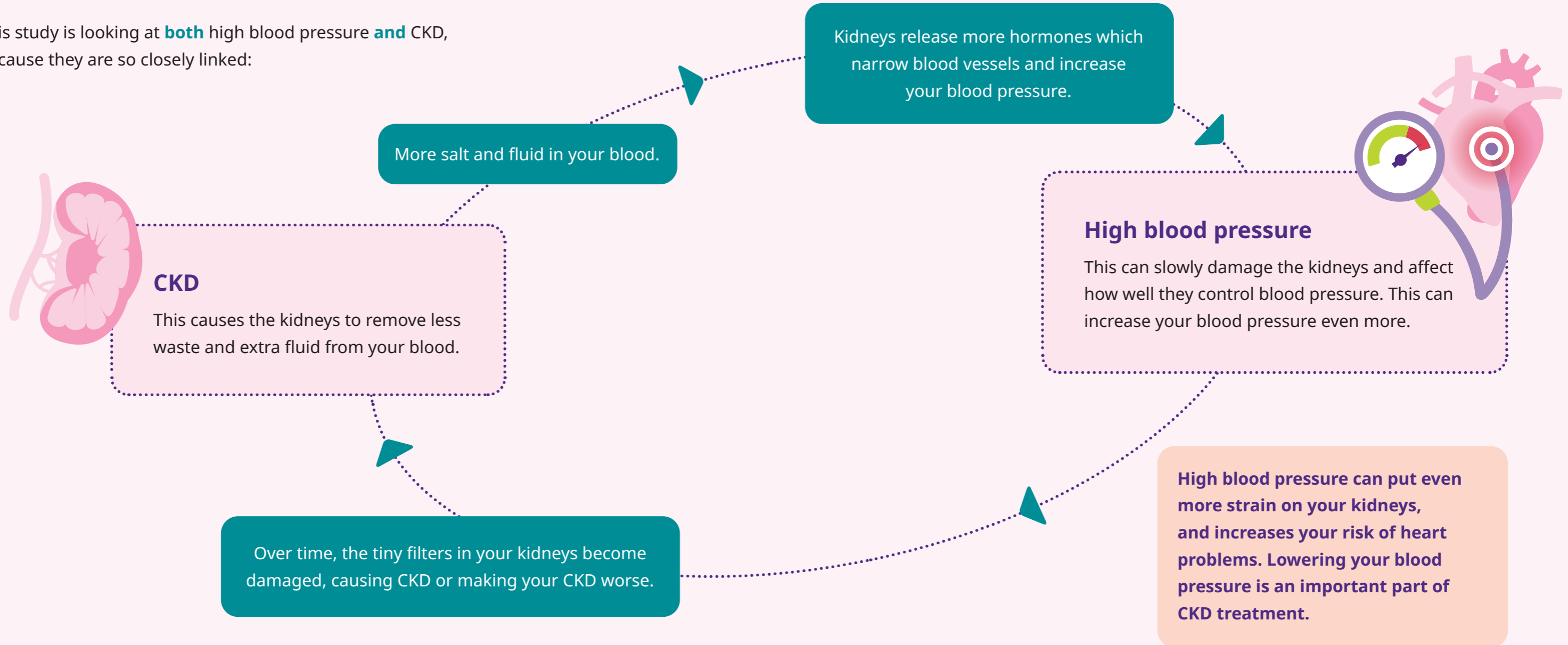
Helping to improve treatment for other people with CKD in the future

REMEMBER

It is **always** your choice whether to take part, and you can stop at any time.

How is high blood pressure linked to CKD?

This study is looking at **both** high blood pressure **and** CKD, because they are so closely linked:



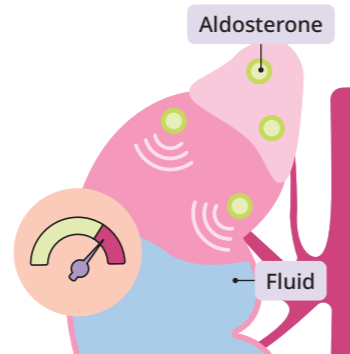
What are the study treatments?

What is baxdrostat?

It's an **experimental treatment** that reduces the levels of a hormone called **aldosterone**.

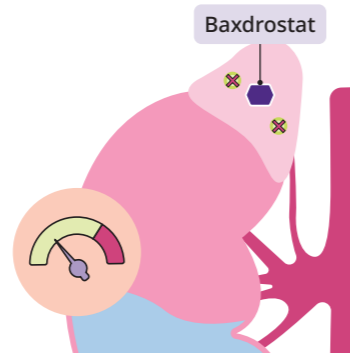
1

Aldosterone tells your kidneys to store salt and fluid. High levels of aldosterone may increase your blood pressure and damage your kidneys.



2

By reducing the levels of aldosterone, baxdrostat may help to lower your blood pressure and protect your kidneys from further damage.

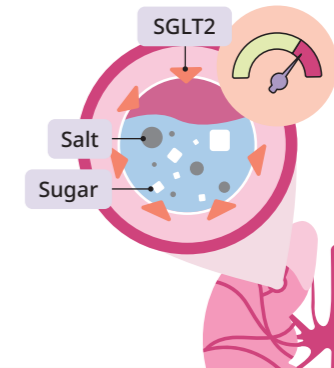


What is dapagliflozin?

A CKD treatment already approved in many countries. It is a type of treatment known as an **SGLT2 inhibitor**.

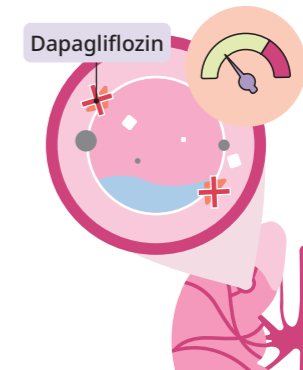
1

SGLT2 keeps more sugar, salt, and fluid in the blood. This can increase blood pressure and damage your kidneys.



2

Dapagliflozin blocks SGLT2, which may help to protect your kidneys.






How will I take the study treatments?

Baxdrostat and dapagliflozin are each taken as **tablets**, once a day. You may already be taking dapagliflozin (or another SGLT2 inhibitor) to treat your CKD.

We think these drugs may **work together** to lower your blood pressure and protect your kidneys more than dapagliflozin on its own.

To help find out, this study will have 2 treatment groups:

	Group 1 Will receive baxdrostat + dapagliflozin tablets every day
	Group 2 Will receive placebo* + dapagliflozin tablets every day
	This means you will have a 50% chance of receiving baxdrostat and dapagliflozin, or placebo and dapagliflozin

*The placebo will look the same as baxdrostat, but it will not contain baxdrostat or any other medicine. Placebos are used to help researchers find out if experimental treatments are working.

NOTE

Everyone taking part will receive dapagliflozin throughout the study. They will also keep taking their regular blood pressure medication during the study.

What can I expect if I take part?

If the study is right for you and you choose to take part, the study will last for **between 3–5 years**.

During the study, you will be asked to:



Take dapagliflozin and baxdrostat or the placebo tablets, **once a day**



Come to **13–21 clinic appointments**, each lasting between **1 and 3.5 hours**. During these appointments, you will have tests and assessments, like:

- Physical exams
- Measurements of your vital signs, like your blood pressure and pulse
- Blood and urine tests
- Heart tests
- Questionnaires about your general well-being and the study



Is there anything else I should know?

As with all medicines, the study treatments may have some **side effects**.

The study doctor can discuss these with you in detail, and answer any questions you may have. If you do take part in the study, the study doctor and their team will monitor you closely.

We do not know what effect the study treatments may have on an unborn child. If you are pregnant, or planning to become pregnant, you will not be able to take part in the study.

We hope this study might help improve treatment for people, like you, with high blood pressure and CKD.

Thank you for thinking about this study.

If you would like more information or are interested in taking part, please speak with your doctor or a member of the local study team.